



ExceLog

6 Channel Handheld Temperature Data Logger with Touch Screen

Features

- 4 x Type J, K, T, E, R, S or N thermocouple inputs and 2 x 3-wire Pt100 inputs
- Display and log all 6 channels simultaneously or individually
- Scheduled and manual logging start/stop
- SD Card stores up to 1 year of data
- Display temperature difference between any two channels
- Battery or mains powered (with included adapter)
- Touch screen with backlight
- 2-channel temperature chart
- Alarm indication for each channel
- CE Marked and RoHS Compliant

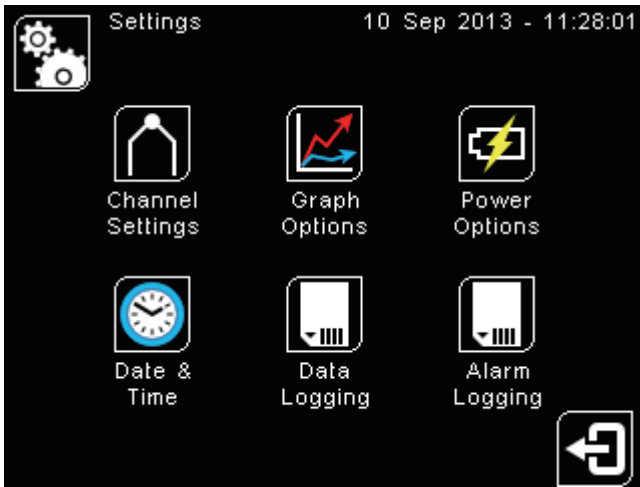
Specifications

GENERAL SPECIFICATIONS	
Inputs	4 x thermocouple inputs (any of the below types), for use with miniature thermocouple connectors, and 2 x 3-wire Pt100 inputs, for use with 3-pole stereo TRS 3.5mm connectors
Temperature Resolution	0.1° for temperatures below 1000° (C or F), 1° for temperatures above 1000° (C or F)
Display	2.83" (72mm) resistive touch TFT, 320 x 240 pixels, backlight
Configurable Parameters	Temperature units, alarms, signal processing, date and time, data logging, power options, graph channels
Temperature Units	°F or °C
Alarm Configuration	12 x alarms (2 per channel) with adjustable level, individually configurable as HI or LO.
Signal Processing	Average, minimum, maximum, standard deviation, 2-channel temperature difference
Display Response Time	1s
Operating Temperature	0~50°C
Power Supply	2 x NiMH rechargeable AA batteries >2000mAh (not supplied), or 2 x alkaline AA batteries > 2000 mAh (not supplied), or 5VDC adapter (included)
Current Draw	250 mA while logging with full display brightness 60 mA (typical) while logging in power saving mode
Weight	190g without batteries
Dimensions	136(w) x 71 (h) x 32 (d) mm, without probes

Input type	Temperature Range	Accuracy of Versalog only (whichever is greater)
Type J	-200~1200°C	±0.1% or 0.8°C
Type K	-200~1372°C	±0.1% or 0.8°C
Type T	-200~400°C	±0.1% or 0.8°C
Type R	0~1768°C	±0.1% or 0.8°C
Type S	0~1768°C	±0.1% or 0.8°C
Type N	0~1300°C	±0.1% or 0.8°C
Type E	-200~1000°C	±0.1% or 0.8°C
Pt100 (3-wire)	-200~850°C	±1.0% or 1.0°C

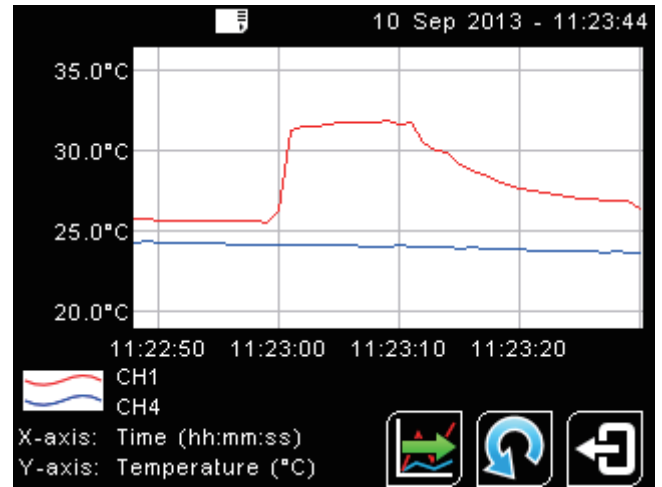
DATA LOGGING SPECIFICATIONS	
Data Logging Interval	1~86400 seconds (1 day)
Max. SD Card Capacity	32 GB SD or SDHD (4 GB SD Card included)
Variables Logged	Measured temperature, cold junction temperature, alarm events
File Format	temperature .csv (can be imported to Excel)
Configurable Parameters	Sample period, number of samples, scheduled start date/time

Description



Intuitive touch screen interface

Fully configurable; no additional hardware is required for configuration. Each channel is configurable separately for input type, maths, alarms and display options.



Temperature Graph

Two selectable channels are displayed. Scroll back in time to view chart history.

Accessories

VLMA	Spare mains adapter
VLSD	Spare 4GB SD Card
VLCALCERT	Callbration certificate, UKAS traceable